

Analysis of Melanoma Using Color Parameter

T Y Satheesha¹, Dr. D Sathyanarayana², Dr.M N Giriprasad³

¹Department of Electronics and Communication Engineering, Assistant Professor, NCET, Bangalore, India

²Department of Electronics and Communication Engineering, Professor and Head, RGM CET, Nandyala, India

³Department of Electronics and Communication Engineering, Professor and Head, JNTUA, Ananthapur, India

Abstract

Early melanoma is often difficult to differentiate from benign pigmented skin lesions (PSLs). Digital epiluminescence microscopy (DELM) and automated image analysis could represent possible aids for inexperienced clinicians. But still it is curable suppose if it is diagnosed at the early stages. In this paper we are focusing to analyze the color parameter to detect the melanoma at the early stage

Key words: Skin Cancer, Melanoma, Early Detection, In Situ Melanoma, Pigmented skin lesion(PSL)

This research paper is organized as follows. Section 2 discusses the literature survey about melanoma insitu skin cancer diagnosis techniques, features and classification, characterization methodologies adopted by researchers. The next section discusses the experimental evaluation work. Finally the conclusion of the research work presented in this paper is discussed in the fourth section.

I. INTRODUCTION

An abnormal growth of cell in a human body is nothing but a cancer. Cancer is mainly classified into two types, histological type and primary site. Suppose by the tissue in which the cancer originated is called histological type of cancer and from the location of the body where the cancer first originate is called primary site of cancer. There are mainly five types of histological type of cancer they are, lymphoma, leukemia, sarcoma, histological and carcinoma. Among these cancer types carcinoma is again subdivided into two types they are, adenocarcinoma and squamous cells.

A cancer that form in the network of the skin that is called pigmented skin lesion also called as skin cancer. There are mainly four types of skin cancer they are, neuro endo crine, squamous cell carcinoma, basal cell carcinoma and finally melanoma. Suppose if a PSL appears in melanocytes, is called melanoma type of skin cancer. In 2014, the estimated new cancer and deaths in US is show in table [1].

Estimated new cases			Estimated deaths		
Both sexes	Male	Female	Both sexes	Male	Female
76100	43890	32210	9710	6470	3240

Tabel [1]

Skin cancer has elevated faster than all other cancers, and the death rate increased especially in fair skinned population in recent years [2]. Nowadays one out of three cancer patients are suffering from skin cancer and according to the National Cancer of Institute one out of five American will develop skin cancer in their life time[3]

II. LITERATURE REVIEW

The early detection of melanoma insitu can be activated in the following diagnosis method they are, asymmetry, In this the asymmetry is verified with respect to a point under one or more axes [5], border, color, differential structure, pattern analysis method looks for identify specific patterns, which may be reticular, globular, cobblestone, homogeneous, starburst, parallel, multicomponent, nonspecific or pigment network, dots/globules/moles,[4], menzies method seek to identify negative and positive features [5], seven point check list refers to seven standard that assess both the chromatic characteristics and the shape and/or texture of the lesion. These standards are atypical pigment network, blue-whitish veil, atypical vascular pattern, irregular streaks, irregular dots/globules, irregular blotches, and regression structures [6],[7], texture analysis, novel method [8]. Again under border based method the PSL is divided into four bicubic segments. Then, it is examined if there is a sharp, steep cutoff of pigment pattern at the periphery of the lesion or a gradual, indistinct cutoff. This features describing the shape of the PSL are then computed, this method involves the following, spherical coordinates [9], JSEG algorithm [10], fuzzy border [11], hybrid architecture [12], active contours [13], border detection [14],[15], thickness ratio [16], the circularly index [17], centroid location [18]. Next under color based method Color features inside the PSL are examined, and the number of colors present is then determined. They involves light brown, dark brown, black, red, white and slate blue. this method involves the following, color texture [19], chromatic difference [20], [21], spherical coordinate, blue whitish veil [22], kinetics of skin lesion [23],[24], wavelet confidents characterization, combined ABCD rule[25]. The above mentioned techniques, methodologies parameters and features

plays an important role to detect, classify and characterize the early stage of skin cancer melanoma.

III. EXPERIMENTAL STUDIES

This experimental study is chiefly designed towards identifying the PSL present in the image and extracting the border for PSL, the asymmetry of the lesion, the color spread factor in the PSL and distortion parameter present in the PSL. In order to extract the above mentioned parameter the images are nonadhesived using the bicubic interpolation technique. The pictorial view of above mentioned steps are as follows:

INPUT IMAGE:-

We have taken one melanoma effected image as input. To find out the feature parameters of this image we will do the image pre-processing on this image. Under the preprocessing steps we will do binarization of the image.

Step 1:-

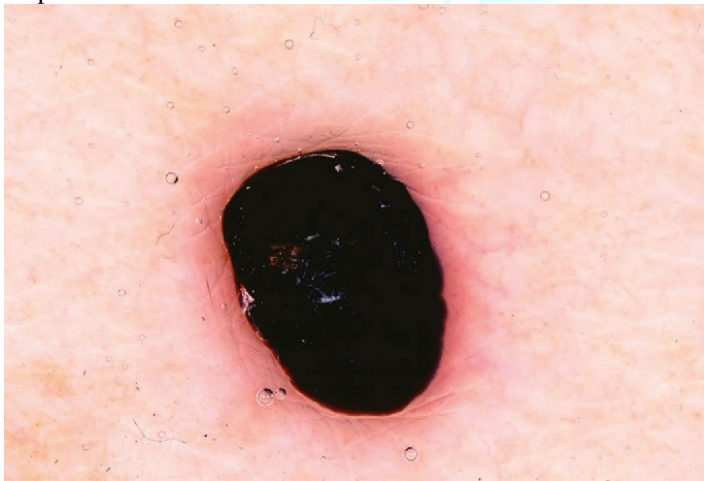


FIG 3.1 MELANOMA INPUT IMAGE

Step 2:

To do the binarization process using 3*3 binary algorithms and for the thresholding of the image we will use adaptive thresholding.

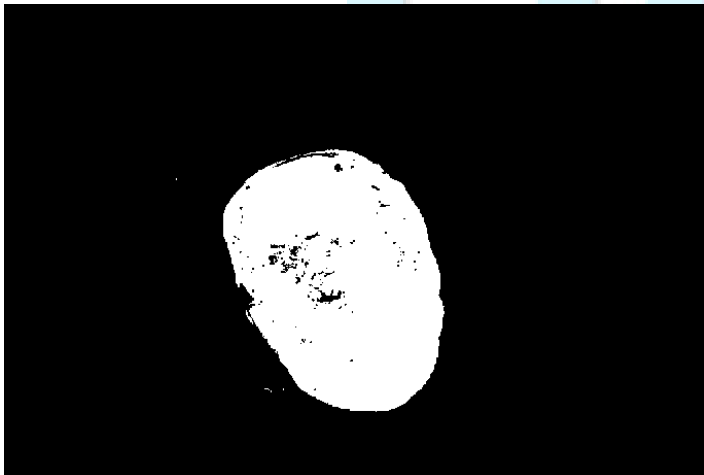


FIG 3.2 BLOCK BINARIZE IMAGE

Step 3:-

In step 3 will use filtering or denoising process on that binarize image.



FIG 3.3 FILTERED OR DENOISED IMAGE

Step 4:

Will calculate the displacement among the sub-moles using region clustering. By using this method we can find the mole location.

Step 5:

Boundary Parameters calculation: Binary Edge Detection

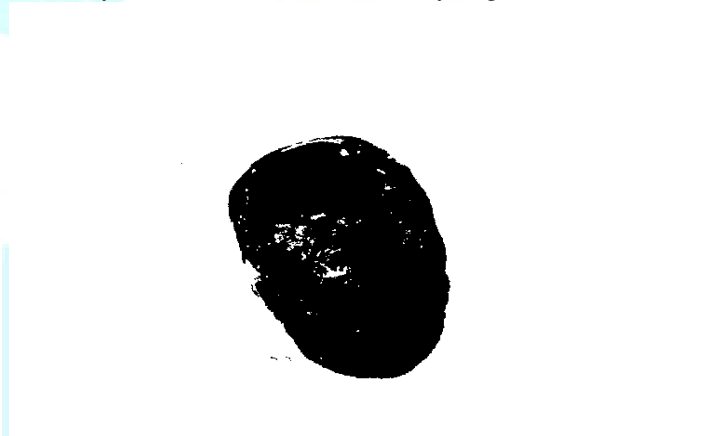
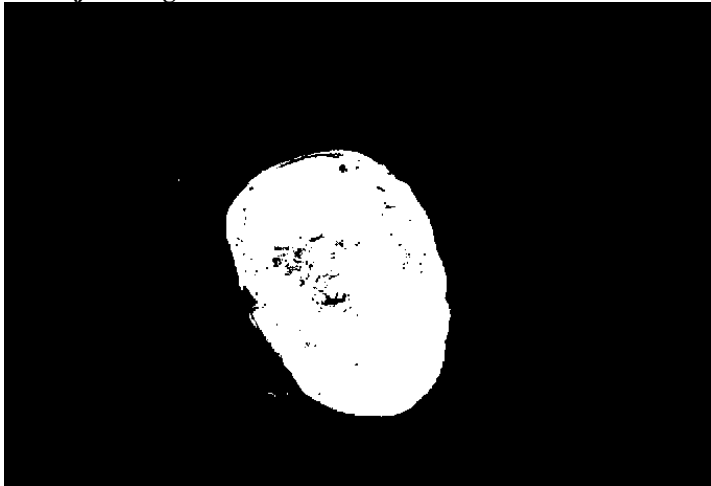


FIG 3.4 BINARY EDGE DISTORTION ANALYZE

Binarized image:



3.5 FREQUENCY OF DISTORTION

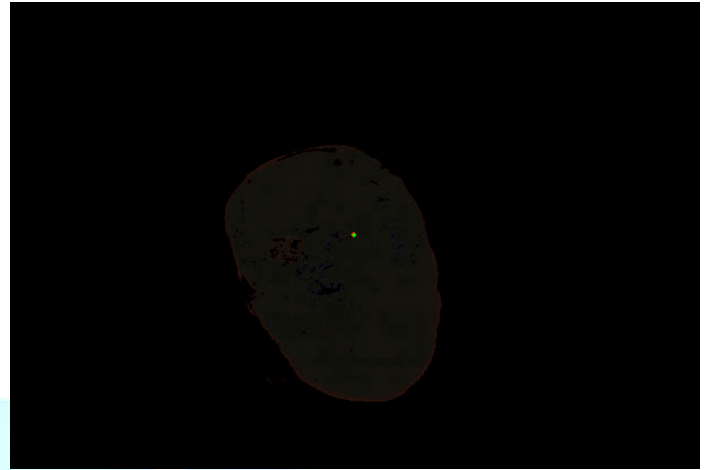


FIG: 3.7 FINAL MOLE RECOGNITION

Free image:

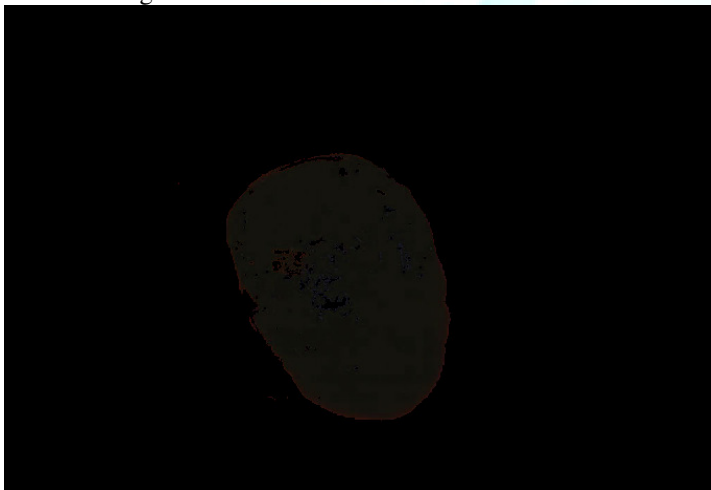


FIG: 3.6 AXIS BASED ASYMMETRY PARAMETERS

Step 6:

MOLE EDGE PARAMETERES

To find the mole edge parameters we will use Border Diffusion Laplacian Filter. The output data will be saved as color spread factor of the NSE free image.

- 1) Distortion parameters : 4.50000
- 2) Symmetry of the data according to the axis : 0.31885
- 3) Color spread factor : 0.00240

Step 7:

Final data to be diagnosed

To find the mole regions we are using Gaussian Filter

IV. CONCLUSION AND FUTURE WORK

A system is being developed to help dermatologists and academician in determining whether a nevus is malignant or not. But from the obtained result it is clear that no one or two parameters can affirm the detection of melanoma insitu, hence an advanced multi parameter computer vision based diagnosis system using multilayer neural network to be adopt to detect melanoma insitu at the early stage.

REFENCES:

- [1] Ilias Maglogiannis, Member, IEEE, and Charalampos N. Doukas, Student Member, IEEE” Overview of Advanced Computer Vision Systems for Skin Lesions Characterization” IEEE TRANSACTIONS ON INFORMATION TECHNOLOGY IN BIOMEDICINE, VOL. 13, NO. 5, SEPTEMBER 2009.
- [2] R. Marks, “Epidemiology of melanoma,” *Clin. Exp. Dermatol.*, vol. 25, pp. 459–463, 2000.
- [3] World Health Organization, Ultraviolet Radiation and the INTERSUNProgramme. (2007. Dec.). [Online]. Available: <http://www.who.int/uv/faq/skincancer/en>.
- [4] T. K. Lee, M. S. Atkins, M.A.King, S. Lau, and D. I. McLean, “Counting moles automatically from back images,” *IEEE Trans. Biomed. Eng.*, vol. 52, no. 11, pp. 1966–1969, Nov. 2005.
- [5] V. T. Y. Ng, B. Y. M. Fung, and T. K. Lee, “Determining the asymmetry of skin lesion with fuzzy borders,” *Comput. Biol. Med.*, vol. 35, pp. 103–120, 2005 .
- [6] G. Betta, G. Di Leo, G. Fabbrocini, A. Paolillo, and M. Scalvenzi, “Automated application of the “7-point checklist” diagnosis method for skin lesions: Estimation of chromatic and shape parameters,” in *Proc. Instrum. Meas. Technol. Conf. (IMTC 2005)*, May, vol. 3, pp. 1818– 1822.

[7] G. Argenziano, G. Fabbrocini, P. Carli, V. De Giorgi, E. Sammarco, and M. Delfino, "Epiluminescence microscopy for the diagnosis of doubtful melanocytic skin lesions. Comparison of the ABCD rule of dermoscopy and a new 7-point checklist based on pattern analysis," *Arch. Dermatol.*, vol. 134, no. 12, pp. 1563–1570, 1998.

[8] A. G. Manousaki, A. G. Manios, E. I. Tsompanaki, and A. D. Tosca, "Use of color texture in determining the nature of melanocytic skin lesions— A qualitative and quantitative approach," *Comput. Biol. Med.*, vol. 36, pp. 419–427, 2006.

[9] I. Maglogiannis, C. Caroni, S. Pavlopoulos, and V. Karioti, "Utilizing artificial intelligence for the characterization of dermatological images," in *Proc. 4th Int. Conf. Neural Netw. Exp. Syst. Med. Healthcare (NNESMED)*, 2001, pp. 362–368.

[10] M. E. Celebi, Y. A. Aslandogan, W. V. Stoecker, H. Iyatomi, H. Oka, and X. Chen, "Unsupervised border detection in dermoscopy images," *Skin Res. Technol.*, vol. 13, no. 4, pp. 454–462, 2007.

[11] V. T. Y. Ng, B. Y. M. Fung, and T. K. Lee, "Determining the asymmetry of skin lesion with fuzzy borders," *Comput. Biol. Med.*, vol. 35, pp. 103–120, 2005.

[12] S. E. Umbaugh, R. H. Moss, and W. V. Stoecker, "An automatic color segmentation algorithm with application to identification of skin tumor borders," *Comput. Med. Imag. Graph.*, vol. 16, pp. 227–235, 1992.

[13] K. Taouil and N. B. Romdhane, "Automatic segmentation and classification of skin lesion images," in *Proc. Distrib. Frameworks Multimedia Appl.*, 2006, pp. 1–12.

[14] K. Taouil, B. Romdhane, and M. S. Bouhleb, "A new automatic approach for edge detection of skin lesion image," in *Proc. Inf. Commun. Technol. (ICTTA 2006)*, pp. 212–220.

[15] I. Maglogiannis, "Automated segmentation and registration of dermatological images," *J. Math. Model. Algorithms*, vol. 2, pp. 277–294, 2003.

[16] I. Maglogiannis and E. Zafiropoulos. (2004). Utilizing support vector machines for the characterization of digital medical images. *BMC Med. Inf. Decis. Making*. [Online]. 4(4). Available: <http://www.biomedcentral.com/content/pdf/1472-6947-4-4.pdf>.

[17] A. Bono, S. Tomatis, C. Bartoli, G. Tragni, G. Radaelli, A. Maurichi, and R. Marchesini, "The ABCD system of melanoma detection: A spectrophotometric analysis of the asymmetry, border, color, and dimension," *Cancer*, vol. 85, no. 1, pp. 72–77, 1999.

[18] A. G. Manousaki, A. G. Manios, E. I. Tsompanaki, and A. D. Tosca, "Use of color texture in determining the nature of melanocytic skin lesions— A qualitative and quantitative approach," *Comput. Biol. Med.*, vol. 36, pp. 419–427, 2006.

[19] Electronic available information at Skin Oncology Teaching Center. (2007, Dec.) [Online]. Available: <http://www.dermoncology.com>

[20] I. Maglogiannis, S. Pavlopoulos, and D. Koutsouris, "An integrated computer supported acquisition, handling and characterization system for pigmented skin lesions in dermatological images," *IEEE Trans. Inf. Technol. Biomed.*, vol. 9, no. 1, pp. 86–98, Mar. 2005.

[21] S. E. Umbaugh, R. H. Moss, and W. V. Stoecker, "Applying artificial intelligence to the identification of variegated coloring in skin tumors," *IEEE Eng. Med. Biol. Mag.*, vol. 10, no. 4, pp. 57–62, Dec. 1991.

[22] Tarun Wadhawan, Rui Hu, and George Zouridakis, Senior Member IEEE "Detection of Blue-Whitish Veil in Melanoma using Color Descriptors", Proceedings of the IEEE-EMBS International Conference on Biomedical and Health Informatics (BHI 2012) Hong Kong and Shenzhen, China, 2-7 Jan 2012.

[23] M. Herbin, F. Bon, A. Venot, F. Jeanlouis, M. Dubertret, L. Dubertret, and G. Strauch, "Assessment of healing kinetics through true color image processing," *IEEE Trans. Med. Imag.*, vol. 12, no. 1, pp. 39–43, Mar. 1993.

[24] G. Hansen, E. Sparrow, J. Kokate, K. Leland, and P. Iuzzo, "Wound status evaluation using color image processing," *IEEE Trans. Med. Imag.*, vol. 16, no. 1, pp. 78–86, Feb. 1997.

[25] M. Elbaum, A. W. Kopf, H. S. Rabinovitz, R. Langley, H. Kamino, M. Mihm, A. Sober, G. Peck, A. Bogdan, D. Krusin, M. Greenebaum, S. Keem, M. Oliviero, and S. Wang, "Automatic differentiation of melanoma from melanocytic nevi with multispectral digital dermoscopy: A feasibility study," *J. Amer. Acad. Dermatol.*, vol. 44, no. 2, pp. 207–218, 2001.